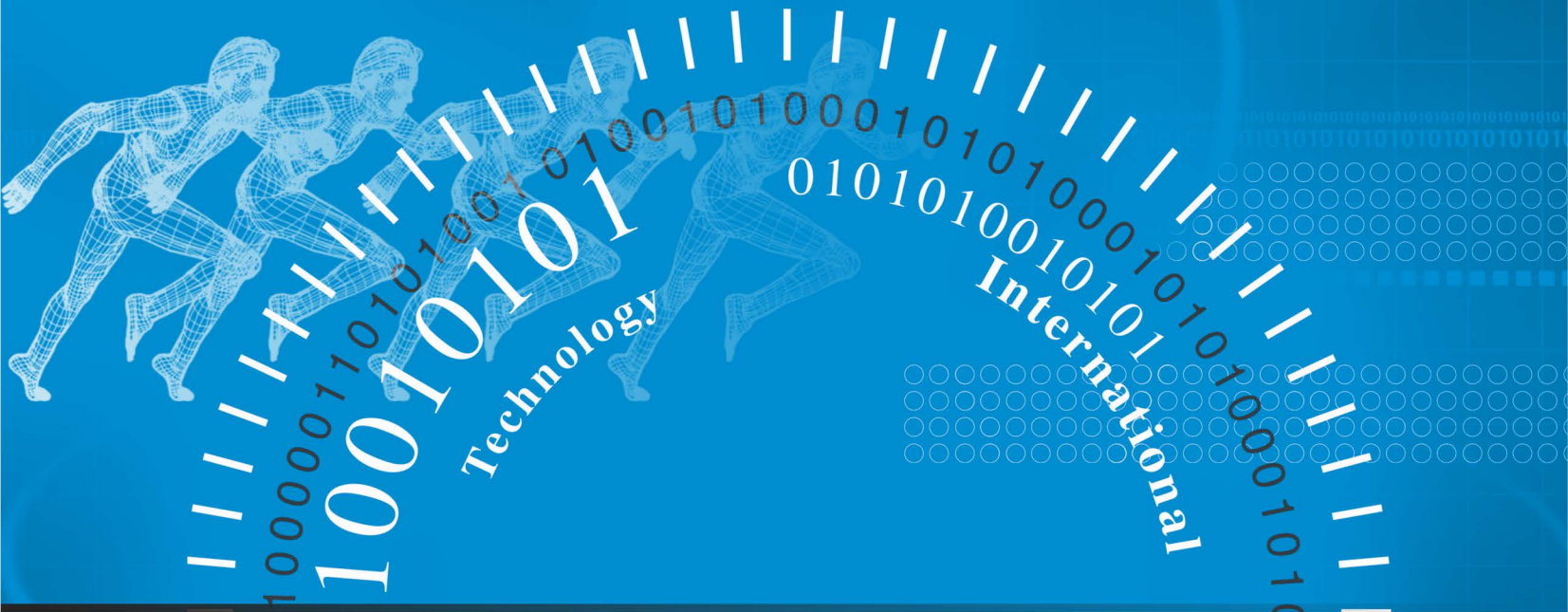


RAJDEEP[®]

Flow Control Pvt. Ltd.

Committed to the Best Quality Products
now and always...



"All Types of Valve for whole Project "

ABOUT US

We **Rajdeep Flow Control Pvt Ltd** are one of the fastest growing name as manufacturer of all types of industrial valves, which provides complete package of your values and worries. We provide complete solution to all type of industries by providing value added services.

We are concern of delivering best quality product to achieve total customer satisfaction with fulfilling all business commitments.

Our Company is constantly conceptualizing customer's ideas into reality by using our expertise with latest technology. We also emphasis on the regularly up gradation of our production system to adapt latest technical advancements. This helps in meeting our client's expectation in terms of quality and value engineering.

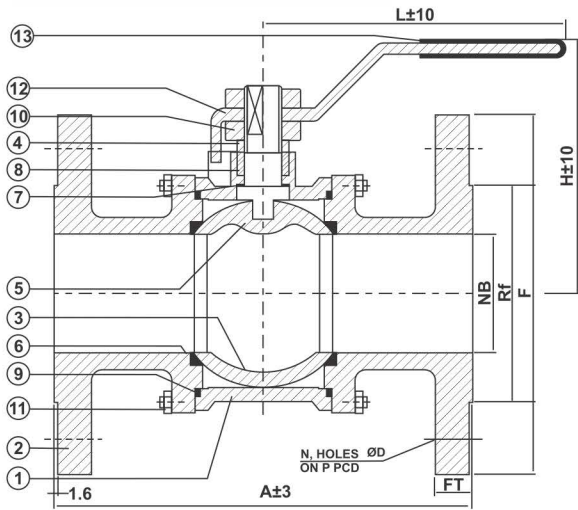
We have a good team which specially works for customer relations. We always listens and respects customer complaints which improves overself internally and satisfies our clients. The team also keeps complete transparency in business deals and gives total supports to our authorized dealers, which results in providing good service to end users.

Company's moto is to provide good quality of products with additional package of best service and keep our client out of his worries as far as our product is concern. This is how we provide a complete package of values and worries.

FIND YOUR OWN WAY TO FLOW



3 PC DESIGN FLANGE END



P. No.	Nomenclature	Material
1	BODY	WCB / CF8 / CF8M / CF3 / CF3M
2	SIDE PIECE	WCB / CF8 / CF8M / CF3 / CF3M
3	BALL	AISI 304 / 316
4	GLAND	AISI 304 / 316
5	STEM	AISI 304 / 316
6	BODY SEAT	PTFE
7	STEM SEAL	PTFE
8	GLAND PACKING	PTFE
9	BODY SEALS	PTFE
10	GLAND NUTS	AISI 304 / 316
11	STUD & NUT	S.S.
12	LEVER	S.S. / M.S.
13	SLEEVE	PVC

TECHNICAL DATA :

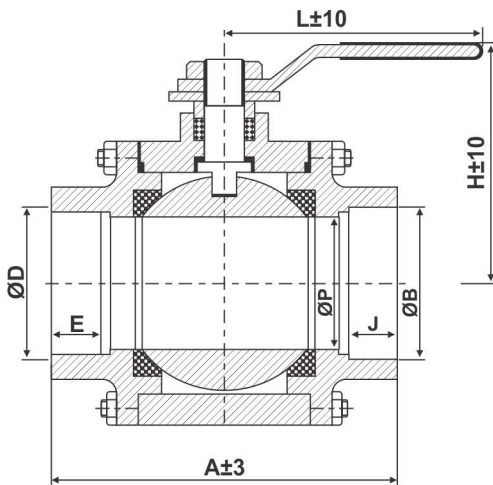
Construction : 3 Piece, Blow-out proof stem, floating Ball, Soft Seated, Full Bore
 Design & Mfg. Std. : AS per BS 5351
 Inspection & Testing Std. : AS per BS 6755
 End Connection : ANSI B 16.5 R/F
 Face to Face : ASME B 16.10
 Pressure & Temp. Rating : ASA 150# & 300#

AVAILABLE OPTION :

- Impregnated PTFE
- other alloys
- Actuator Operated

CLASS	150 #										300 #		
	SIZE	NB	A	F	FT	Rf	'P'	'd'	'N'	L	H	A	F
15	12.5	108.0	88.9	9.7	35	60.5	16	4	115	70	140	95	67
20	17	117.5	98.5	10.5	43	69.9	16	4	155	75	152	117	83
25	24	127.0	108.0	11.2	51	79.2	16	4	155	80	165	124	89
40	37	165.1	127.0	14.3	73	98.5	16	4	165	90	191	156	114
50	49	177.8	152.4	15.9	92	120.6	19	4	165	100	216	165	127
65	64	190.5	178.0	17.5	105	139.7	19	4	260	150	241	190	149
80	75	203.2	190.5	19.1	127	152.4	19	4	470	175	283	210	168
100	98	228.6	228.6	23.9	157	190.5	19	8	500	200	305	254	200
125	125	254.0	254.0	23.9	186	215.9	22.2	8	500	210	381	280	235
150	148	266.7	279.4	25.4	216	241.3	22.2	8	525	225	403.5	317	270

3 PC DESIGN, FULL BORE SCREWED (BSP/NPT) / SOCKET WELD



TECHNICAL DATA :

MOC : A 105 / WCB / CF8 / CF8M / CF3 / CF3M
 PRESSURE & TEMP. RATING : ASA 150#

SIZE	A	Ø P	SOCKET WELD		SCREWED		H	L
			Ø B	J	Ø D	E		
15	69	9	21.8	9.5	1/2"	13.6	46	145
20	75	12.5	27.1	12.5	3/4"	13.9	46	145
25	85	17	33.8	12.5	1"	17.3	55	155
40	104	28	48.7	12.5	1 1/2"	18.4	85	200
50	119	36	61.1	15.9	2"	19.2	95	200

ASA 150#

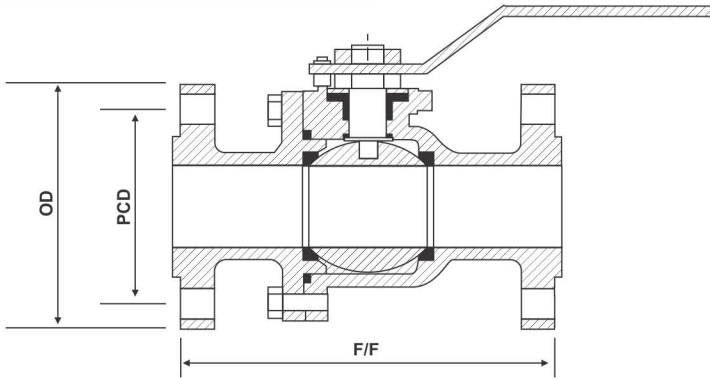
HYDRAULIC TEST PRESSURE	
BODY	425 PSIG
SEAT	300 PSIG

ASA 300#

HYDRAULIC TEST PRESSURE	
BODY	1100 PSIG
SEAT	800 PSIG



"All Types of Valve for whole Project"



TECHNICAL DATA :

Construction : 2 Piece, Blow-out proof stem, floating Ball, Soft Seated, Full Bore
 Design & Mfg. Std. : AS per BS 5351
 Inspection & Testing Std. : AS per BS 6755
 End Connection : ANSI B 16.5 R/F
 Face to Face : ASME B 16.10
 Pressure & Temp. Rating : ASA 150# & 300#

AVAILABLE OPTION :

- Impregnated PTFE
- other alloys
- Actuator Operated

2 PC DESIGN FLANGE END

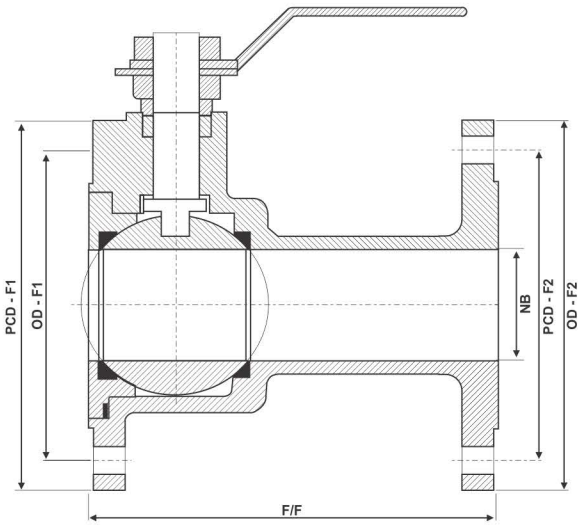
CLASS	150 #			300 #		
	SIZE	F/F	PCD	OD	F/F	PCD
15	108	60.5	89	140	67	95
20	117	70	98.5	152	83	117
25	127	79.5	108	165	89	124
40	165	98.8	127	191	114	156
50	178	120.5	152.5	216	127	165
65	190	140	178	241	149	190
80	203	152.5	191	283	168	210
100	229	190.5	229	305	200	254
150	267	241.5	279.5	403.5	270	317
200	292	298.5	343	419.5	330	381
250	330	362	406.5	457	387	444
300	356	432	482.5	502	451	521

ASA 150#

HYDRAULIC TEST PRESSURE	
BODY	425 PSIG
SEAT	300 PSIG

ASA 300#

HYDRAULIC TEST PRESSURE	
BODY	1100 PSIG
SEAT	800 PSIG



FLUSH BOTTOM BALL VALVE

SIZE	Detail of Dimension				
	NB	F/F	FOD	PCD	NO OF HOLE OD
50 x 50	37	115	152.5	120.5	19 (4)
65 x 65	50	130	178	140	19 (4)
80 x 80	64	140	191	152.5	19 (4)
100 x 100	76	166	229	190.5	19 (4)

TECHNICAL DATA :

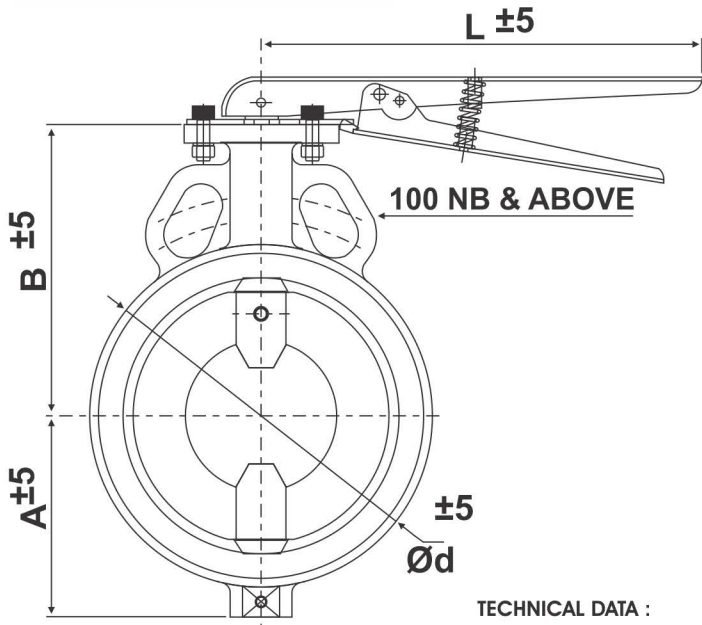
Manufacturing Std. : AS PER BS 5351
 End Connection : ASA 150#
 Inspection and Testing Std. : AS PER BS 5146, ISO 5208
 Operating at 45 Deg.

Rajdeep Flush Bottom Ball Valves (Step Size) is another Specially for tank bottom Control. In Single Piece Design - Investment casting, fabricated & Jacketed.

HYDRAULIC TEST PRESSURE	
BODY	30 Kg./cm ²
SEAT	22 Kg./cm ²



Play the Game you can



TECHNICAL DATA :
Manufacturing Std. : API 609
End Connection : Water Type
Inspection and Testing Std. : API 598
Operating at 45 Deg.

HYDRAULIC TEST PRESSURE

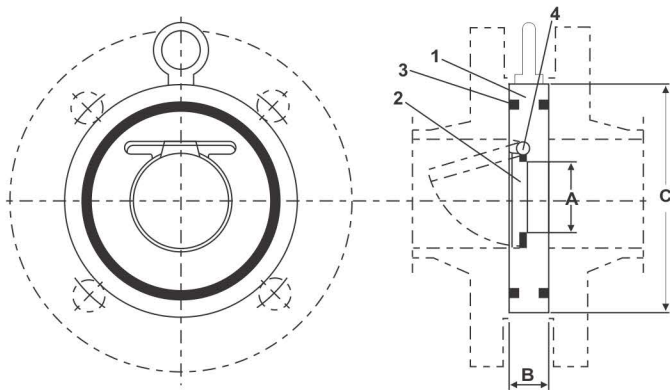
HYDRAULIC TEST PRESSURE	
BODY	15 kg/cm ²
SEAT	10 kg/cm ²

BUTTERFLY VALVE

SEVER / GEAR / PNEUMATIC / MOTORISED

VALVE SIZE & DIMENSION (in mm)							
SIZE	A	B	C	ID	E	ØD	L
40	54.5	102.5	33	40	133	80	185
50	58	114	43	50	143	94	235
65	67.5	122	46	65	151	108	235
100	94.5	*46	52	100	175	150	235
125	108	158	58	125	188	182	265
150	120	174	56	150	206	205	265
200	147.5	98.5	60	200	230	257	340
250	215	260	71	241	295	320	375
300	250	284	81	289	319	370	375

Sr. No.	Qty.	Nomenclature	Material
1	1	BODY	Cast Iron is 210 Gr. FG200
2	1	DISC	S.G. IRON
3	1	SEAT	EPDM (LINED)
4	2	STEM	AISI 410
5	2	BEARING BUSH (DU)	STEEL BACKED PTFE
6	2	SHAFT GUIDE BUSH	POLY ACETAL
7	1	DOWEL PIN	SPRING STEEL
8	1	TAPER PIN	STAINLESS STEEL
9	3	'O' RINGS	NITRILE
10	1	HANDLE	M.S. FABRICATED



WAFER TYPE CHECK VALVE

BILL OF MATERIAL			
SR.	Item	Qty.	Material
1	Body & Disc	1	Cast Iron (IS 210 Gr.220)
			Cast Steel (ASTM A 216 Gr. WCB)
2	Disc		Stainless Steel (ASTM A 351 Gr. CF8 / CF8M)
3	'O' Ring	2	Nitrile, EPDM, Viton, Silicon, PTFE
4	Hinge Pin	1	AISI 304 / 316

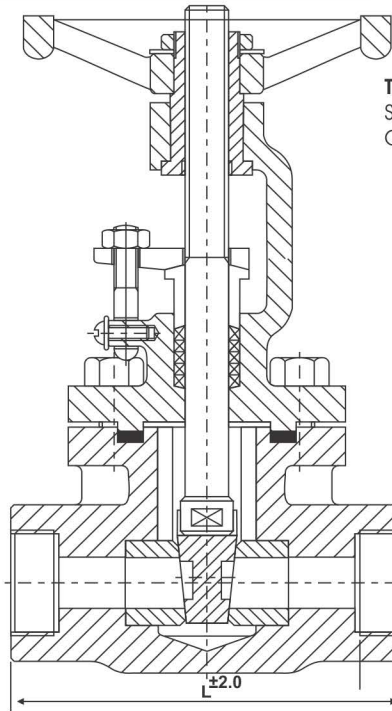
NB	25	40	50	65	80	100	125	150	200	250	300	400	450	500
A	12	20	27	40	50	70	92	105	147	192	215	310	360	405
B	15	15	15	15	15	16	19	20	22	25	25	30	35	35
C	62	76	96	112	127	158	185	212	262	308	365	506	541	600

Rajdeep Check Valve combine a short face to face dimensions and the low weight guarantee a simple & space saving installation between the flanges.



"All Types of Valve for whole Project"

Forged Steel GATE VALVE



TECHNICAL DATA :
Size Range : 1/2" to 2"
Class : 800 # to 2500#

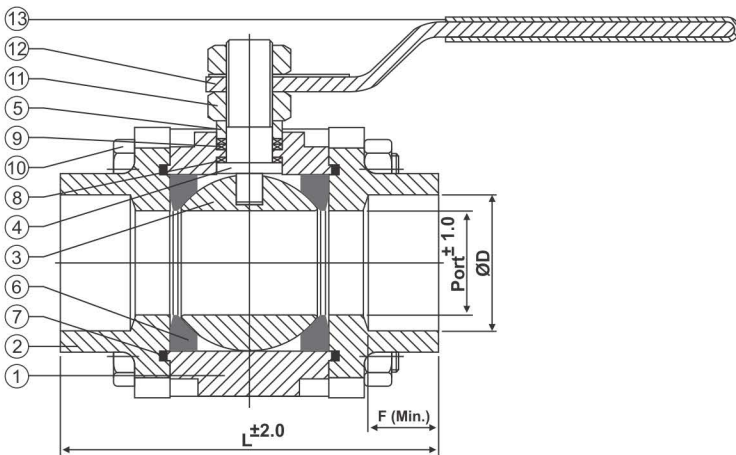
HYDRAULIC TEST PRESSURE

	800 #	1500 #	2500 #
BODY	3000 PSIG	5400 PSIG	9000 PSIG
SEAT	2000 PSIG	4000 PSIG	6600 PSIG

STANDARDS

MANUFACTUREING	API 602 / BS 5352
END CONNECTION	Screwed Ends to BSP (F) Socket Weld Ends to ANSI B16.11
INSPECTION AND TESTING STD	API 598/BS 6755 (Part-I)

SIZE	800 #	1500 #	2500 #
	L Face to Face - SCR/SW	L Face to Face - SCR/SW	L Face to Face - SCR/SW
15	85	92	104
20	92	104	127
25	104	127	140
40	127	140	---
50	140	---	---



TECHNICAL DATA :
Manufacturing Std. : BS 5159 / BS 5351 (R.P)
End Connection : Screwed Ends to BSP (F)
Inspection and Testing Std. : BS 6755 (Part-I)

Forged Steel BALL VALVE

P. No.	Qty.	Nomenclature	Material
1	1	BODY	ASTM A105
2	2	CONNECTORS	ASTM A105
3	1	BALL	AISI 304 / ASTM A351 Gr. CF8
4	1	STEM	AISI 304
5	1	GLAND	AISI 304
6	2	SEAT	CFT
7	2	BODY SEALS	CFT
8	1	STEM PACKING	CFT
9	Req.	GLAND PACKING	CFT
10	4-4	BODY BOLTS & NUTS	ASTM A193 Gr.B7 & ASTM A194 Gr.2H
11	1-1	GLAND NUTS & STEM NUT	AISI 304
12	1	HANDLE	CARBON STEEL
13	1	SLEEVE	PVC

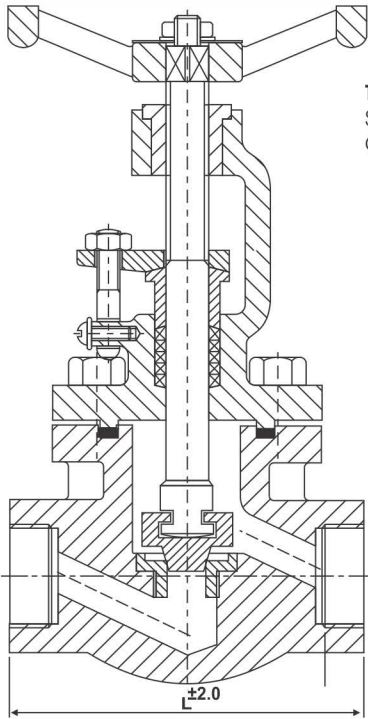
TEST PRESSURE		
TESTING	BODY	SEAT
HYDRAULIC	1479 PSIG	996 PSIG
AIR	-----	100 PSIG

SIZE	PART	L	ØC (BSP)	E
15	10	65	1/2"	13.56
20	12.5	70	3/4"	13.87
25	17	92	1"	17.35
40	30	112	1 1/2"	18.38
50	37	125	2"	19.23



Change the Way you think

Forged Steel GLOBE VALVE



TECHNICAL DATA :
Size Range : 1/2" to 2"
Class : 800 # to 2500#

HYDRAULIC TEST PRESSURE

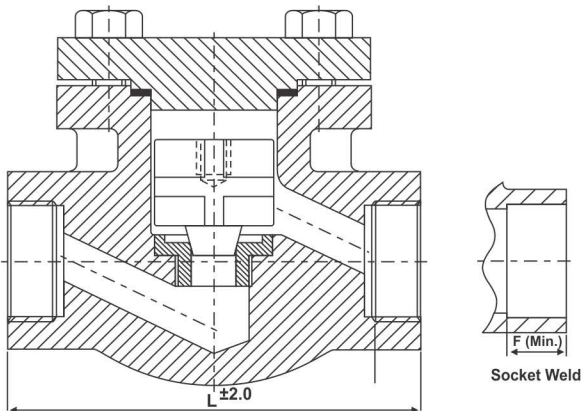
	800 #	1500 #	2500 #
BODY	3000 PSIG	5400 PSIG	9000 PSIG
SEAT	2000 PSIG	4000 PSIG	6600 PSIG

STANDARDS

MANUFACTUREING	API 602 / BS 5352
END CONNECTION	Screwed Ends to BSP (F)
	Socket Weld Ends to ANSI B16.11
INSPECTION AND TESTING STD	API 598/BS 6755 (Part-I)

SIZE	800 #	1500 #	2500 #
	L Face to Face - SCR/SW	L Face to Face - SCR/SW	L Face to Face - SCR/SW
15	85	92	104
20	92	104	127
25	104	127	140
40	127	140	---
50	140	---	---

Forged Steel CHECK VALVE



TECHNICAL DATA :
Size Range : 1/2" to 2"
Class : 800 # to 2500#

HYDRAULIC TEST PRESSURE

	800 #	1500 #	2500 #
BODY	3000 PSIG	5400 PSIG	9000 PSIG
SEAT	2000 PSIG	4000 PSIG	6600 PSIG

STANDARDS

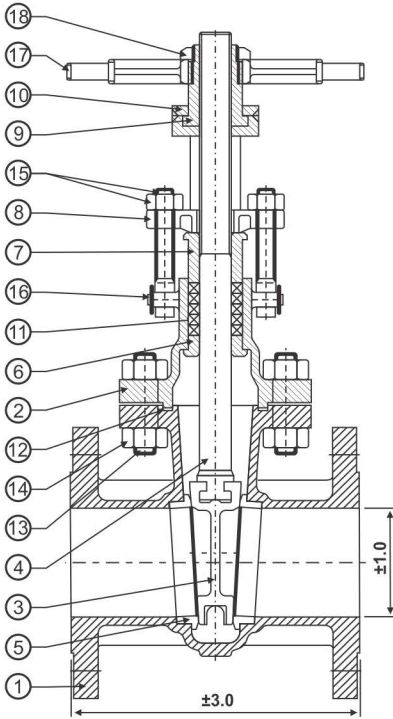
MANUFACTUREING	API 602 / BS 5352
END CONNECTION	Screwed Ends to BSP (F)
	Socket Weld Ends to ANSI B16.11
INSPECTION AND TESTING STD	API 598/BS 6755 (Part-I)

SIZE	800 #	1500 #	2500 #
	L Face to Face - SCR/SW	L Face to Face - SCR/SW	L Face to Face - SCR/SW
15	85	92	104
20	92	104	127
25	104	127	140
40	127	140	---
50	140	---	---



"All Types of Valve for whole Project"

GATE VALVE



TECHNICAL DATA :

Size Range :

½" to 12"

Class :

150 # to 300#

Manufacturing Std. :

API 600 / BS 1414 / MSS-SP80

Inspection & Testing Std. :

API 598

Design Standards :

API 600 / BS 1414 / MSS-SP80

TEST PRESSURE :

ASA 150#

- Testing Hydraulic
- Body 425 PSIG
- Seat 300 PSIG

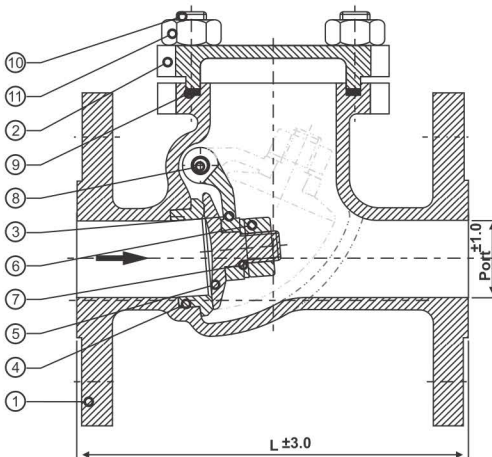
ASA 300#

- Testing Hydraulic
- Body 1100 PSIG
- Seat 800 PSIG

P. No.	Qty.	Material
1	1	BODY
2	1	BONNET
3	1	WEDGE
4	1	STEM
5	2	SEAT RINGS
6	1	BACKSEAT BUSHING
7	1	GLAND
8	1	GLAND FLANGE
9	1	YOKE SLEEVE
10	1	SLEEVE RETAINER
11	5min	STEM PACKINGS
12	1	BONNET GASKET
13	Req.	BONNET STUDS
14	Req.	BONNET NUTS
15	2	GLAND EYEBOLTS & NUTS
16	2	SCREW & WASHER
17	1	HANDWHEEL
18	1	HANDWHEELNUT

SIZE	PORT	L Face to Face - RF	
		150 #	300 #
25	25	127	165.1
32	32	139.7	177.8
40	38	165.1	190.5
50	51	177.8	215.9
65	64	190.5	241.3
80	76	203.2	282.4
100	102	228.6	304.8
125	127	254	381
150	152	266.7	403.3
200	203	292.1	419.1
250	254	330.2	457.2
300	305	355.6	501.6

All dimensions are in M.M.



TECHNICAL DATA :

Size Range :

½" to 12"

Class :

150 # to 300#

Manufacturing Std. :

BS 1868

Inspection & Testing Std. :

API 598

TEST PRESSURE :

ASA 150#

- Testing Hydraulic
- Body 425 PSIG
- Seat 300 PSIG

ASA 300#

- Testing Hydraulic
- Body 1100 PSIG
- Seat 800 PSIG

SWING CHECK VALVE

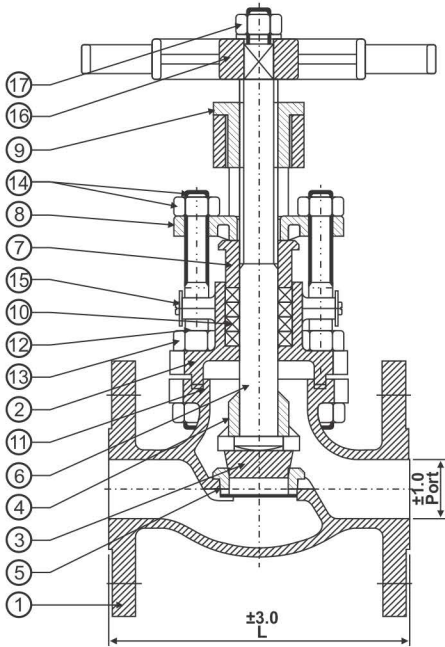
P. No.	Qty.	Material
1	1	BODY
2	1	COVER
3	1	HINGE
4	1	SEAT RINGS
5	1	DISC
6	2	DISC RETAINING NUTS
7	1	DISC WASHER
8	1	HINGE PIN
9	1	COVER GASKET
10	Req.	COVER STUDS
11	Req.	COVER NUTS

SIZE	PORT	L Face to Face - RF	
		150 #	300 #
25	25	127	215.9
32	32	139.7	228.6
40	38	165.1	241.3
50	51	203.2	266.7
65	64	215.9	292.1
80	76	241.3	317.5
100	102	292.1	355.6
125	127	330.2	400
150	152	355.6	444.5
200	203	495.3	533.4
250	254	622.3	622.3
300	305	698.5	711.2

All dimensions are in M.M.



GLOBE VALVE



TECHNICAL DATA :

Size Range :
½" to 12" DN25 - DN300
Class :
150 # to 300#

Manufacturing Std. :
BS1873, ANSI B16.10
Inspection & Testing Std. :
BS 6755 (Part-I)

Design Standards :
BS1873

TEST PRESSURE :

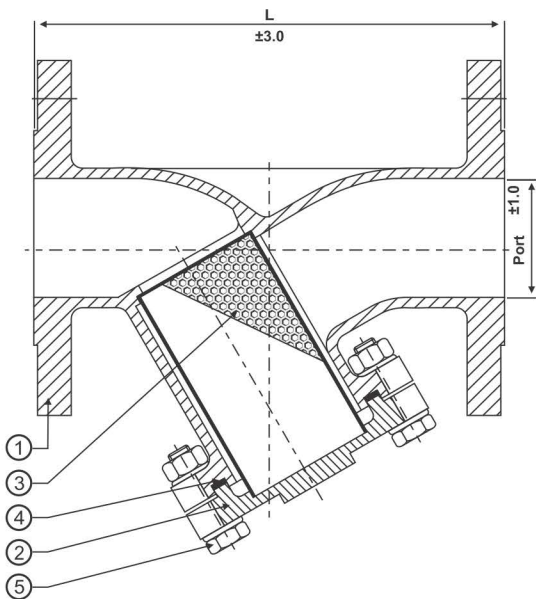
ASA 150#
• Testing Hydraulic
• Body 425 PSIG
• Seat 300 PSIG

ASA 300#
• Testing Hydraulic
• Body 1100 PSIG
• Seat 800 PSIG

P. No.	Qty.	Material
1	1	BODY
2	1	BONNET
3	1	DISC
4	1	DISC RETAINER
5	2	SEAT RINGS
6	1	STEM
7	1	GLAND
8	1	GLAND FLANGE
9	1	YOKE BUSH
10	5min	STEM PACKINGS
11	1	BONNET GASKET
12	Req.	BONNET STUDS
13	Req.	BONNET NUTS
14	2	GLAND EYEBOLTS & NUTS
15	2	SCREW & WASHER
16	1	HANDWHEEL
17	2	WHEEL NUT & WASHER

SIZE	PORT	L Face to Face - RF	
		150 #	300 #
15	13	107.9	152.4
20	19	117.3	177.8
25	25	127	203.2
32	32	139.7	215.9
40	38	165.1	228.6
50	51	203.2	266.7
65	64	215.9	292.1
80	76	241.3	317.5
100	102	292.1	355.6
125	127	355.6	400
150	152	406.4	444.5
200	203	495.3	558.8
250	254	622.3	622.3
300	305	698.5	711.2

All dimensions are in M.M.



TECHNICAL DATA :

Size Range :
½" to 12"
Class :
150 # to 300#

Manufacturing Std. :
Bolted Cover 'Y' Type

TEST PRESSURE :

ASA 150#
• Testing Hydraulic
• Body 425 PSIG

ASA 300#
• Testing Hydraulic
• Body 1100 PSIG

'Y' TYPE STRAINER

SIZE	PORT	L Face to Face - RF	
		150 #	300 #
15	13	107.9	152.4
20	19	117.3	177.8
25	25	127	203.2
32	32	139.7	215.9
40	38	165.1	228.6
50	51	203.2	266.7
65	64	215.9	292.1
80	76	241.3	317.5
100	102	292.1	355.6
125	127	355.6	400
150	152	406.4	444.5
200	203	495.3	558.8
250	254	622.3	622.3
300	305	698.5	711.2

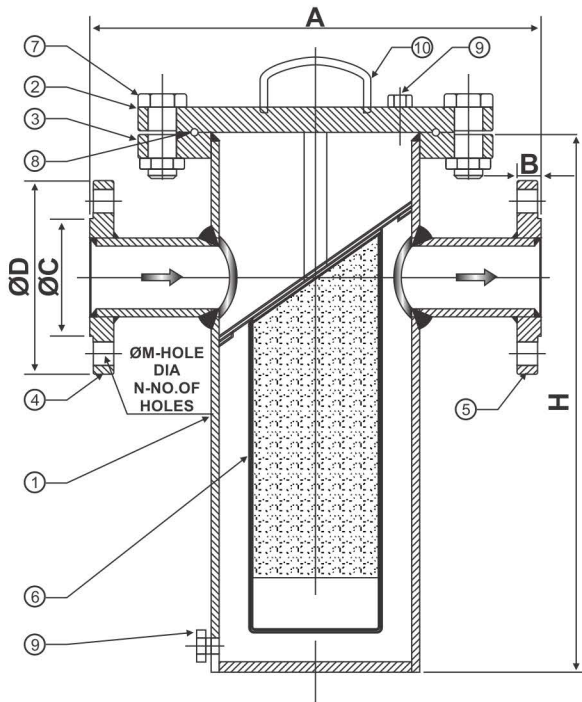
P. No.	Qty.	Material
1	1	BODY
2	1	COVER
3	1	SCREEN
4	1	COVER GASKET
5	1	COVER BOLTS & NUTS

All dimensions are in M.M.



"All Types of Valve for whole Project"

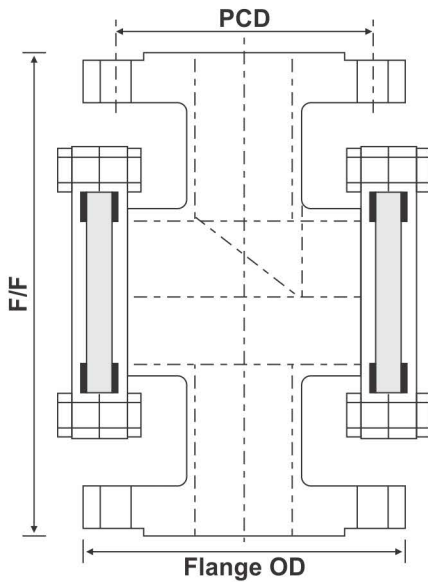
STRAINER BASKET TYPE (Dirt Box)



HYDRAULIC TEST PRESSURE	
BODY	225 PSIG
SEAT	150 PSIG

SIZE		CLASS - 150					
mm	inch	A	H	B	ØD	ØM	P.C.D.
25	1"	200	250	11	108	16	79
40	1½"	260	290	14	127	16	98.5
50	2"	260	300	16	152	19	120.5
65	2½"	260	300	17.5	178	19	140
80	3"	300	315	19	190.5	19	152.4
100	4"	330	350	24	229	19	190.5
125	5"	400	400	24	229	19	190.5
150	6"	400	425	25	279	22	241
200	8"	465	550	28.5	343	22	298.4

Sr. No.	Qty.	Nomenclature	Material
1	1	BODY	IS2062
2	1	TOP COVER	IS2062
3	1	BODY COVER	IS2062
4	1	INLET FLANGE	IS2062
5	1	OUTLET FLANGE	IS2062
6	1	SCREEN	SS304
7	-	COVER BOLT & NUT	CARBON STEEL
8	1	GASKET	NITRILE
9	1	DRAINPLUG & VENTPLUG	ASTMA 105
10	1	LIFTING HANDLE	CARBON STEEL



DOUBLE WINDOW VIEW GLASS

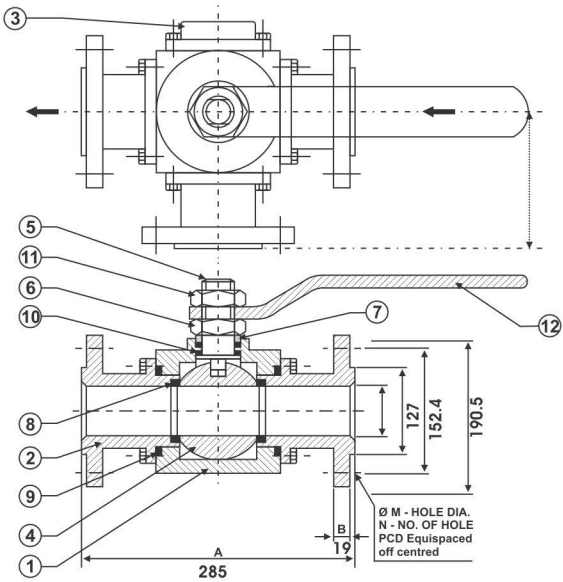
CLASS	150 #					
SIZE	F/F	PCD	OD	Dia RF	Hole Dia	No. of Hole
25	127	79.5	108	51	16	4
40	165	98.8	127	73	16	4
50	178	120.5	152.5	92	19	4
65	190	140	178	105	19	4
80	203	152.5	191	127	19	4
100	229	190.5	229	157	19	8
150	267	241.5	279.5	216	22.5	8

Features	
Design STD	As per BS 5351
Face to Face	As per ASME B 16.10
Flange Eng	As per ASME B 16.5
Testing STD	As per BS 5351, ISO 5208

Material Specifications	
Body	CF8M, CF8, CF3M, CF3, WCB Etc.
Side Piece	CF8M, CF8, CF3M, CF3, WCB Etc.
Glass	Toughened Glass
Gasket	PTFE, Glass or Carbon PTFE Etc.



Filter the Way you think

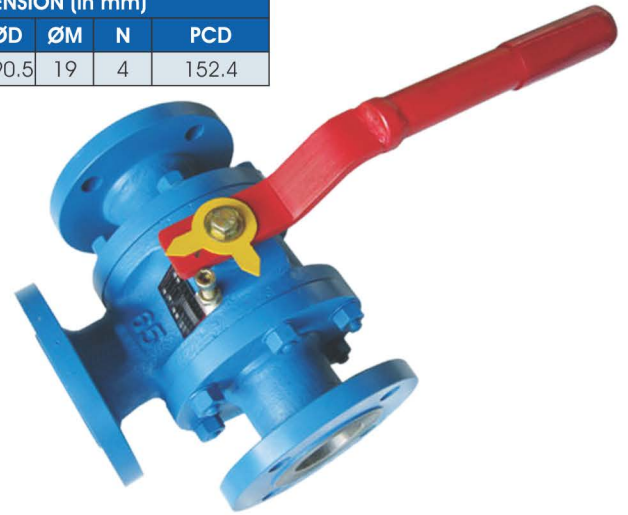


**2 Seat Design
(L - Port)**

TECHNICAL DATA :

Design & Mfg. Std. : AS per BS 5351
 Inspection & Testing Std. : AS per BS 6755
 End Connection : ANSI B 16.5 R/F
 Face to Face : ASME B 16.10
 Pressure & Temp. Rating : ASA 150#

VALVE SIZE & DIMENSION (in mm)							
SIZE	F-F	F-TK	RF-ØD	ØD	ØM	N	PCD
80	285	19	127	190.5	19	4	152.4



**2 Seat Design
(L - Port Only)**

VALVE SIZE & DIMENSION (in mm)							
SIZE	F-F	F-TK	RF-ØD	ØD	ØM	N	PCD
80	285	19	127	190.5	19	4	152.4

HYDRAULIC TEST PRESSURE

BODY	30 Kg./cm ²
SEAT	22 Kg./cm ²

Sr. No.	Qty.	Nomenclature	Material
1	1	BODY	ASTM A 216 GR. WCB
2	3	BODY ADAPTOR	ASTM A 216 GR. WCB
3	1	BODY END CAP	ASTM A 216 GR. WCB
4	1	BALL	AISI 304
5	1	STEM	S.S.
6	1	GLAND NUT	S.S.
7	1	GLAND BUSH	S.S.
8	2	SEAT RING	PTFE
9	2	BODY SEAL	PTFE
10	2	STEM SEAL	PTFE
11	1	LOCK NUT	AISI 202
12	1	LEVER	M.S.



"All Types of Valve for whole Project "



SIGHT GLASSES

FEATURES :

- 360° Visual Flow Indicator.
- All wetted parts in Borosilicate glass & PTFE
- Unrestricted full bore flow
- Glass available in situation for ease of maintenance
- 15 mm to 150 mm in 4" & 6" Length
(Special length will be provided)

Available Options :

- Non wetted parts M.S.) Powder Coated or Zinc Plated)
- I.C.-CF8 / CF8M
- AISI - 304 / 316
- Ellenkey Fitted



Confirm to high quality & Longlife

This Valve is also known as Tank Bottom Valves. It is mainly used where mat at bottom is choked or Clogged or suspended particals to be removed with external pressure from the bottom & receive direct flow at time.

Size : 25 mm to 250 mm

Moc : AISI 304 / 316

Design & Mfg. Std. : BS 1873

Available Options :

- Opening into Valve
- Jacketted Flush Bottom Valve
- O.S. & Y Type
- Other alloys

Rajdeep Flush Bottom Ball Valves (Step Size) is another Specially for tank bottom Control. In Single Piece Design - Investment casting, fabricated & Jacketted.

Also ask for FEP, PFA Linned Valves, Fittings & PTFE Linned Pipes.

FLUSH BOTTOM VALVE



DEALERS DETAIL :